

# SUMMER@



BASIS  
INDEPENDENT™  
BROOKLYN

# EPIC MOMENTS

Unforgettable Summer.



**This is the place where EPIC MOMENTS happen**

Day  
Camps

Academic  
Camps

# Day Camps

## Junior Day Camp

Where every day is EPIC • PreK – Rising Kindergarten

We're in session for summer! Our summer program is a fun-filled adventure for children ages 4 and 5. Each week, preschoolers jump into action, participating in fun and exciting activities, field trips, and special events. Our activity blocks are sprinkled throughout each week, giving preschoolers fun and variety in their camp day.



**The Artist in Me**  
Campers will get crafty using a variety of materials to create wacky and abstract masterpieces, nurturing their creative flair!



**Build it Better!**  
Little builders dive into messy fun with hands-on building projects using Legos, foam, clay, and more!



**Kids Helping Kids**  
Campers learn the joy of giving back as they work together to help community members in need.



**Splash-tacular!**  
Campers stay cool and have a blast with water-themed games, water tables, sprinkler runs, and more, making a splash this summer!



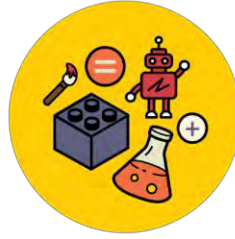
**Kids Helping Kids**  
Campers learn the joy of giving back as they work together to help community members in need.



**Connect the Dots**  
Campers exercise critical thinking and problem-solving skills through engaging activities.



**Minute to Win It**  
Ready, set, go! Campers enjoy a thrill working together to complete fun and sometimes silly tasks before the clock runs out.



**Tinker Around**  
Young learners experience S.T.E.A.M. through fun projects that encourage questions, problem-solving, and exploration.



**Listen to Your Art**  
Campers engage in movement and dramatic play, expressing themselves and fostering creativity!



**Curiosity Lab**  
Campers delve into the wonders of science and exploration, sparking their curiosity and creativity!

### Fees\*

**Registration Fee (one-time, non-refundable):** \$80

**Non-refundable Deposit (per session):** \$25

**Weekly Camp Fee:** \$660

**Early Bird:** \$50

**Late Bird:** \$125

### Camp Hours:

8:30AM – 3:30PM

### Early and Late Bird Hours:

**Early Bird:** 7:30AM – 8:30AM

**Late Bird:** 3:30PM – 6:00PM

### Weeks:

**June 24th – August 23rd**

9 one-week sessions

\*No Camp July 4<sup>th</sup>



\*Please see fee schedule page for payment and cancellation policies



# Day Camps

## School-Age Day Camp

Where every day is EPIC • Rising Grades 1 – 5

Every week, campers delve into the realms of science, nature, and creative arts, while engaging in a medley of sports and games. Our camp promises an exceptional array of indoor and outdoor activities, including weekly special events and spirit days, adding an extra layer of delight and creating unforgettable moments. These adventures are complemented by captivating field trips that tap into local resources, all culminating in a summer filled with epic adventures and cherished memories.



**Draw, Paint, Create**  
Campers discover their inner artist in a vibrant journey filled with brushes, colors, and boundless imagination!



**Project Blueprint**  
Delve into simple machines and architectural design, sparking curiosity and problem-solving skills.



**Color Wars**  
Join the pep rally! Campers gather for songs, chants, and challenges, promoting collaboration and team spirit.



**Summer Games**  
Channel your inner Olympian! Engage in friendly competitions, team sports, and challenges promoting camaraderie and sportsmanship.



**Kids Helping Kids**  
Inspire compassion and empathy through various service projects, creating a brighter future for those in need.



**Makerspace**  
Creativity and construction collide! Plan and build 3D objects using wood, clay, PVC, and more in our innovative Makerspace.



**Myth Busters**  
Tease your brain! Brain teasers, puzzles, and riddles enhance logic, reasoning, problem-solving, and math skills.



**Discover Lab**  
Collaborate and innovate! Campers solve problems and develop a love for science, technology, engineering, art, and math.



**Joyful Noise**  
Laughter abounds as campers gain creativity and confidence through singing, dancing, and acting.



**Cosmic Exploration**  
Embark on an extraordinary journey through the stars, exploring the wonders of the universe through stargazing and space-themed experiments.

### Fees\*

**Registration Fee (one-time, non-refundable):** \$80

**Non-refundable Deposit (per session):** \$25

**Weekly Camp Fee:** \$605

**Early Bird:** \$50

**Late Bird:** \$125

### Camp Hours:

8:30AM – 3:30PM

### Early and Late Bird Hours:

**Early Bird:** 7:30AM – 8:30AM

**Late Bird:** 3:30PM – 6:00PM

### Weeks:

**June 24th – August 23rd**

9 one-week sessions

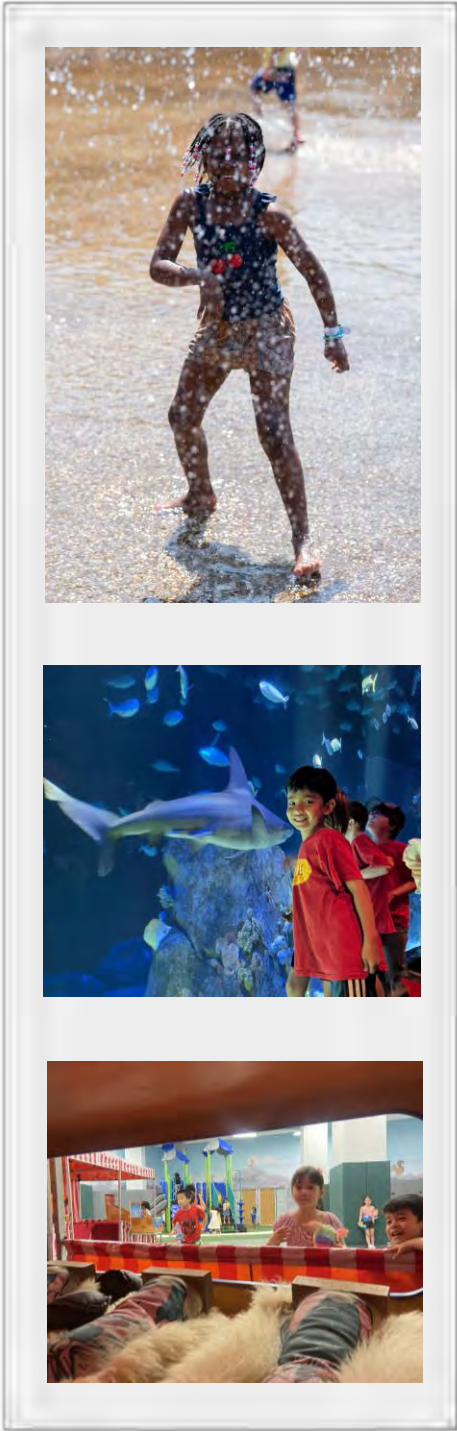
\*No Camp July 4<sup>th</sup>



\*Please see fee schedule page for payment and cancellation policies

# EPIC Themes & Field Trips

Rising PreK – Grade 5



Our weekly themes and field trips are a fundamental part of our camp structure and experience. Each week, campers will explore different topics through an array of activities, building confidence, new skills, and amazing friendships along the way. In addition, weekly field trips encourage campers to explore the local community, find new interests, and deepen their cultural understandings. All weeks of camp culminate in Special Event Fridays such as our camp-wide Carnival and Color Games field day competition.

Session	Theme	Field Trip
6/24 - 6/28	Happy Birthday	Laser Bounce Family Fun Center
7/1 - 7/5*	Paint the Town	Brooklyn Paints Art Studio
7/8 - 7/12	Out of this World	NY Hall of Science
7/15 - 7/19	Into the Wild	Prospect Park Zoo
7/22 - 7/26	Color Games	Sloomoo Institute
7/29 - 8/2	Ahoy Matey	Le Frak Splash Pad
8/5 - 8/9	Superhero	Ferox Athletics
8/12 - 8/16	Magical Moments	Museum of Illusion
8/19 - 8/23	Under the Big Top	LEGOLAND Discovery Center

\*No Camp July 4



# Academic Camps

## Keep learning while having fun

### Rising Kindergarten – Grade 3

Academic camps are a wonderful way to enhance your child's love of learning while focusing on a specific subject. From math and robotics to literature and creative writing, we have something for every student..



### Kindergarten Enrichment

Step into the crucial pre-kindergarten months with Kindergarten Enrichment: A Pre-K to K Adventure! This program bridges the transition from preschool to kindergarten, laying the foundation for a lifelong love of learning. We work on sharpening literacy and math skills, while also providing opportunities for your child to practice kindergarten etiquette through authentic play and collaborative learning.

With a combination of **half-day Kindergarten Enrichment and a half day of Day Camp**, campers enjoy hands-on experiences and foster new skills, all while having a blast.

**Price:** \$1200

**Hours:** 8:30 AM – 3:30 PM

**Grades:** Rising Kindergarten

**Weeks:** August 12 – August 23

### Mandarin Language Immersion and Enrichment

Join us this summer for an immersive Mandarin experience at BASIS Independent Brooklyn Lower School! With instruction led by members of our Mandarin team, students will have a blast while exploring the Mandarin language and Chinese culture, engaging in topics from Tai Chi to calligraphy. As a half-day summer camp entirely in Mandarin, this camp is a great opportunity for rising grade 1 and 2 students to get a head start on their Mandarin journey, as well as being an enriching, meaningful experience that will stay with them for a lifetime!

**Grades:** Rising Grades 1 – 2

**Hours:** 8:30 AM – 12:00 PM

**Week:** August 12 – August 23

**Price:** \$700

### Wrap – Around Day Camp

Attend Mandarin Language Immersion and Enrichment in the morning, switch over to our School – Age Day Camp program for the afternoon. \* *Wrap – Around Day Camp is only available to campers in the Mandarin Language Immersion and Enrichment camp.*

**Grades:** Rising Grades 1 – 2

**Hours:** 12:00 PM – 3:30 PM

**Week:** August 12 – August 23

**Price:** \$600

# WorldStrides Hawaii Trip

## Hawaii Educational Adventure Hands-On Learning, Unforgettable Memories

Dates: July 14 – July 20

On this once-in-a-lifetime adventure, students will explore one of the most diverse ecosystems in the world across the **Big Island (Hawaii Island) and Oahu**. Traveling through WorldStrides, a leader in experiential learning, they'll embark on a journey filled with hands-on education. This immersive experience not only guarantees an unforgettable educational journey but also offers the chance to meet and bond with families across our community of schools. This adventure will be a topic of conversation for years to come, as students and families create lasting memories together.



Epic experiences



Creating lifelong friendships



Expand your horizons

### Inclusions and details:

- Individual Student and Family Options\*
- 7 Days and 6 Nights
- Transportation to and from LAX to Hawaii\*\*
- Hotel Accommodations
- Admission to all Attractions
- All Meals (unless otherwise stated)
- 24-Hour Course Leader
- Accident & Medical Insurance
- Opportunity to Earn Free Academic Credit
- Must be age 9 by start of trip to travel alone

\*There is \$100 discount per person for 2 or more family members that travel on this trip.

\*\*Families are responsible for transportation to and from the LAX airport.

### Cost of program:

- \$4,925 Per participant: Quad
- \$5,418 Per participant: Triple
- \$5,664 Per participant: Double
- \$6,403 Per participant: Single

Sign up with an initial deposit of \$99.

Pricing based on 30 participants signing up for our trip. Add on the Full Refund Program for only \$339.

For more information and to register visit:

<https://worldstrides.com/custom/2024-spring-education-group-hawaii-211882/>

# Big Island (Hawaii) Highlights

From the raw power of active volcanoes at Volcanoes National Park to the captivating Punalu'u Black Sand Beach, where we might spot green sea turtles basking on the unique shore, and the marine wonders at Kealakekua Bay, we'll create lasting memories of this diverse and breathtaking natural paradise.



## Volcanoes National Park

Study volcanology at the Kilauea Visitor Center, hike through volcanic craters, scalded deserts, and lush rainforests; walk into an actual lava tube and see two active volcanoes. This 300,000-acre national park is home to Kilauea Volcano, one of the most active volcanoes in the world!



## Punalu'u Black Sand Beach

Visit one of the most famous black sand beaches in the world. These beaches get their color from volcanic lava contacting the ocean—as the lava cools rapidly, it shatters into small basalt fragments giving the beach its black color.



## Kealakekua Bay

Board a catamaran for a cruise to Kealakekua Bay, a Marine Life Conservation District. Snorkel in the brilliant blue waters and see vibrant coral, tropical fish, and on occasion, spinner dolphins. The Bay has historical significance too, as it marks the spot Captain James Cook first landed on Hawaii Island in 1778.



## Kilauea Iki Crater Hike

You'll start in a lush rainforest and descend to the floor of the Kilauea Iki Crater, a solidified lava lake which still contains many active steam vents. The vibrant colors and varied wildlife of the rainforest is a stark contrast to the steam vents, cinder cones, and splatter cones found in the crater.



## From the Big Island to Oahu

As we bid farewell to the enchanting landscapes of the Big Island, where we've explored the Halema'uma'u Crater, we transition to Oahu. There, we'll continue our educational journey with an ascent to the iconic Diamond Head, offering panoramic views of the Pacific. At Pearl Harbor, we'll pay our respects at the USS Arizona Memorial, and then immerse ourselves in Hawaiian culture with a traditional Luau and Polynesian Show.



### Halema'Uma'U Crater

Located on the summit of Mount Kilauea, this underground lava lake has formed a crater that's nearly 3,000-feet in diameter and over 200-feet deep. Students will enjoy a night hike to the crater and stop along the way for stargazing in the pitch-black, unpolluted sky.



### Diamond Head

Climb the 99 stairs to the top of Diamond Head, a well-known landmark of the Honolulu Volcanic Series. This 763-foot volcanic tuff cone summit boasts an exhilarating 360-degree panoramic view!



### USS Arizona

The USS Arizona Memorial, at Pearl Harbor in Honolulu, Hawaii, marks the resting place of 1,102 of the 1,177 sailors and Marines killed on USS Arizona during the Japanese surprise attack on Pearl Harbor on December 7, 1941, and commemorates the events of that day.



### Hawaiian Luau and Polynesian Show

Enjoy a traditional Hawaiian Luau and authentic Polynesian show. Students will learn how to play the ukulele, participate in a hula dance, and discuss the local legends and the cultural connections the Hawaiian people have to the land. This is a Hawaiian favorite you don't want to miss!



# 2024 Fee Schedule

## Registration Fee

Registration Fee (one-time, non-refundable)	\$80
---	------

Day Camp	Weekly Camp Fee	Early Bird	Late Bird
Junior (PreK – Rising Kindergarten, Ages 4-5)	\$660 (Week 2: \$530)*	\$50 (Week 2: \$40)*	\$125 (Week 2: \$100)*
School-Age (Rising Grades 1-5)	\$605 (Week 2: \$485)*	\$50 (Week 2: \$40)*	\$125 (Week 2: \$100)*
Day Camp Wrap Around (Mandarin Language Immersion and Enrichment Only)	\$600	\$50	\$125

\*No Camp July 4<sup>th</sup>

Academic Camps	Dates	Camp Fee
Kindergarten Enrichment	August 12 - August 23	\$1200
Mandarin Language Immersion and Enrichment	August 12 - August 23	\$700

**Payment Policy:** A one-time, \$80 non-refundable registration fee, plus a \$25 non-refundable deposit per session is required at registration. The balance of fees for summer programs will be automatically withdrawn on May 1 from the credit card on file. Receive a 5% discount off total camp tuition when registered by March 15.



# 2024 Camp Planner

\* **Camper T-shirts:** Each camper receives one t-shirt with camp registration (Sizes Youth 2T – Adult 3XL).

Week	Junior Day Camp	School-Age Day Camp	Kindergarten Enrichment	Mandarin Language Immersion and Enrichment
<b>Week 1:</b> June 24 – 28				
<b>Week 2:</b> July 1 – 5*				
<b>Week 3:</b> July 8 – 12				
<b>Week 4:</b> July 15 – 19				
<b>Week 5:</b> July 22 – 26				
<b>Week 6:</b> July 29 – August 2				
<b>Week 7:</b> August 5 – 9				
<b>Week 8:</b> August 12 – 16				
<b>Week 9:</b> August 19 – 23				

\*No Camp July 4





# 2024 Camp Policies



## Contact

For any camp related questions and inquiries, please contact our team at [bibsummerprograms@basisindependent.com](mailto:bibsummerprograms@basisindependent.com).

## Lunch

Lunch is available to purchase through our food partner, Butter Beans Kitchen (a link to enroll in this lunch program will be provided after camp registration). A bagged lunch will be provided to all campers on our weekly field trip day. In addition, families are asked to provide their child with a reusable water bottle to bring to every day of camp. Summer is hot and we want to make sure our campers are well hydrated. Water refill stations will be available.

## Payment Policy

A one-time, \$80 non-refundable registration fee, plus a \$25 non-refundable deposit per session is required at registration. The balance of fees for summer programs will be automatically withdrawn on May 1 from the credit card on file. Receive a 5% discount off total camp tuition when registered by March 15.

## Refund/Cancelation Policy (Day Camp Only)

Cancellations require a 2-week notification from the start date of the session. No refunds will be given for cancellations within 2 weeks. Refunds will not include the \$25 deposit or the \$80 registration fee. In the event the school must cancel a camp, every effort will be made to find a replacement class for the camper. If a refund is provided, it may include all fees, including deposit and registration.

## Refund/Cancelation Policy (Academic, Specialty, and Sports Camps)

Cancellations must be made by April 29, 2024 to receive a refund. Refunds will not include the \$25 deposit or the \$80 registration fee.

## Sibling Discount

10% sibling discount (applied to second and subsequent children only, and not applicable to Early/Late Bird).

## Referral Discount

\$50 camp tuition credit to the referring family for each family referred. Referred family must list referring family name when registering in ACTIVE. Credit may only be used in ACTIVE; no check or cash bonuses.

# SUMMER@

 BASIS  
INDEPENDENT™  
BROOKLYN

# EPIC MOMENTS

Unforgettable Summer.



**This is the place where EPIC MOMENTS happen**

Specialty  
Camps

Sports  
Camps



# Specialty Camps

## Explore and expand their interests

Grades 3 – 12

Our specialty camps are packed with hands-on activities that offer experiences for campers to discover new skills and talents. Whatever your child's interests are, we have fun and unique activities for them to try!



### Chess Camp

Our ICN chess coaches are ready to embark on a strategic journey at our one-week chess camp! From novice to advanced players, immerse yourself in daily workshops, tactical puzzles, and intense matches. Learn from seasoned chess masters, sharpen your opening repertoire, and engage in exciting tournaments. With a blend of theory and practice, this camp promises a week of skill enhancement, camaraderie, and, of course, checkmate moments. Programming will be structured around skill levels. Join us for a chess-filled week of growth, conditioning, and fun!

**Grades:** 3 - 12

**Week:** August 19– August 23

**Time:** 9:00am – 4:00pm

**Price:** TBD



### Broadway Camp

Unleash your inner performer at our one-week theatre camp! Dive into the world of drama with daily acting exercises, improv sessions, and script readings. Our very own seasoned instructor, Ms. Markel, will guide you through character development, stage presence, and the art of storytelling. This immersive experience promises a week of creativity, self-expression, and the joy of theatrical accomplishment, culminating in a Broadway show or museum field trip! Join us for a theatrical adventure with Ms. Markel and your fellow thespians!

**Grades:** 6 - 9

**Week:** August 26– August 30

**Time:** 1:00pm – 4:00pm

**Price:** \$500

# Explore and expand their interests

Grades 3 – 12



## Dungeons and Dragons and the Magic of STEAM

Set out on a thrilling adventure with Ms. Milden as we combine Dungeons and Dragons and STEAM to create a memorable and engaging camp experience! Your imagination will soar as you delve into a world of mythical creatures, epic quests, and strategic gameplay. Whether you're a seasoned player or a beginner, our expert Dungeon Master, Ms. Milden will guide you through character creation, storytelling, and exciting campaigns. Engage in collaborative problem-solving, forge alliances, and sharpen your decision-making skills. With daily quests, magical creature crafts, science experiments, creative challenges, and a final epic showdown, this immersive camp promises a week of friendship, strategy, and unforgettable fantasy fun!

**Grades:** 3 – 5

**Week:** August 12 – August 16

**Time:** 9:00am – 4:00pm

**Price:** \$650



## Art in New York

Embark on an enriching journey at our one-week summer camp in the heart of New York City! Immerse yourself in the cultural tapestry of the city as each day unfolds with a visit to a unique museum. From the iconic Metropolitan Museum of Art to the awe-inspiring American Museum of Natural History, our camp offers a curated exploration of art, science, and history. Engage in hands-on activities, guided tours, and interactive exhibits, fostering a love for learning in an unforgettable, creative adventure. Join us for a week of discovery, inspiration, and the vibrant spirit of New York's cultural treasures.

**Grades:** 9 - 12

**Week:** August 12 – August 16

**Time:** 1:00pm – 4:00pm

**Price:** \$500



# Sports Camps

## Learn skills and gain confidence

Grades 5 – 8

Our rigorous sports camp promotes skill building, exposes children to new activities, and helps build healthy exercise habits. We bring sports specialists from our school community to help each camper improve, practice, and play.



### Bears Basketball Clinic

Back again for a second summer! Elevate your basketball skills at our intensive one-week clinic led by our CONSAT JHS Coach Jeffrey Wilder. Coach Wilder brings his skills as a former Iona Division 1 player and high school/college coach! Join us for a transformative experience where fundamentals meet advanced techniques. Throughout the week, participants will receive personalized coaching, skill-building drills, and strategic insights to enhance their game. The clinic culminates in an exhilarating scrimmage, allowing players to showcase their newfound abilities in a supportive and competitive environment. Don't miss this exclusive opportunity to learn from the best, refine your game, and embrace the passion for basketball in a dynamic and empowering atmosphere.

**Grades:** 5 - 8

**Week:** August 19 – August 23

**Time:** 9:00am – 4:00pm

**Price:** \$650

# WorldStrides Hawaii Trip

## Hawaii Educational Adventure Hands-On Learning, Unforgettable Memories

Dates: July 14 – July 20

On this once-in-a-lifetime adventure, students will explore one of the most diverse ecosystems in the world across the **Big Island (Hawaii Island) and Oahu**. Traveling through WorldStrides, a leader in experiential learning, they'll embark on a journey filled with hands-on education. This immersive experience not only guarantees an unforgettable educational journey but also offers the chance to meet and bond with families across our community of schools. This adventure will be a topic of conversation for years to come, as students and families create lasting memories together.



### Inclusions and details:

- Individual Student and Family Options\*
- 7 Days and 6 Nights
- Transportation to and from LAX to Hawaii\*\*
- Hotel Accommodations
- Admission to all Attractions
- All Meals (unless otherwise stated)
- 24-Hour Course Leader
- Accident & Medical Insurance
- Opportunity to Earn Free Academic Credit
- Must be age 9 by start of trip to travel alone

\*There is \$100 discount per person for 2 or more family members that travel on this trip.

\*\*Families are responsible for transportation to and from the LAX airport.

### Cost of program:

- \$4,925 Per participant: Quad
- \$5,418 Per participant: Triple
- \$5,664 Per participant: Double
- \$6,403 Per participant: Single

Sign up with an initial deposit of \$99.

Pricing based on 30 participants signing up for our trip. Add on the Full Refund Program for only \$339.

For more information and to register visit:

<https://worldstrides.com/custom/2024-spring-education-group-hawaii-211882/>



# Big Island (Hawaii) Highlights

From the raw power of active volcanoes at Volcanoes National Park to the captivating Punalu'u Black Sand Beach, where we might spot green sea turtles basking on the unique shore, and the marine wonders at Kealakekua Bay, we'll create lasting memories of this diverse and breathtaking natural paradise.



## Volcanoes National Park

Study volcanology at the Kilauea Visitor Center, hike through volcanic craters, scalded deserts, and lush rainforests; walk into an actual lava tube and see two active volcanoes. This 300,000-acre national park is home to Kilauea Volcano, one of the most active volcanoes in the world!



## Punalu'u Black Sand Beach

Visit one of the most famous black sand beaches in the world. These beaches get their color from volcanic lava contacting the ocean—as the lava cools rapidly, it shatters into small basalt fragments giving the beach its black color.



## Kealakekua Bay

Board a catamaran for a cruise to Kealakekua Bay, a Marine Life Conservation District. Snorkel in the brilliant blue waters and see vibrant coral, tropical fish, and on occasion, spinner dolphins. The Bay has historical significance too, as it marks the spot Captain James Cook first landed on Hawaii Island in 1778.



## Kilauea Iki Crater Hike

You'll start in a lush rainforest and descend to the floor of the Kilauea Iki Crater, a solidified lava lake which still contains many active steam vents. The vibrant colors and varied wildlife of the rainforest is a stark contrast to the steam vents, cinder cones, and splatter cones found in the crater.

## From the Big Island to Oahu

As we bid farewell to the enchanting landscapes of the Big Island, where we've explored the Halema'uma'u Crater, we transition to Oahu. There, we'll continue our educational journey with an ascent to the iconic Diamond Head, offering panoramic views of the Pacific. At Pearl Harbor, we'll pay our respects at the USS Arizona Memorial, and then immerse ourselves in Hawaiian culture with a traditional Luau and Polynesian Show.



### Halema'Uma'U Crater

Located on the summit of Mount Kilauea, this underground lava lake has formed a crater that's nearly 3,000-feet in diameter and over 200-feet deep. Students will enjoy a night hike to the crater and stop along the way for stargazing in the pitch-black, unpolluted sky.



### Diamond Head

Climb the 99 stairs to the top of Diamond Head, a well-known landmark of the Honolulu Volcanic Series. This 763-foot volcanic tuff cone summit boasts an exhilarating 360-degree panoramic view!



### USS Arizona

The USS Arizona Memorial, at Pearl Harbor in Honolulu, Hawaii, marks the resting place of 1,102 of the 1,177 sailors and Marines killed on USS Arizona during the Japanese surprise attack on Pearl Harbor on December 7, 1941, and commemorates the events of that day.



### Hawaiian Luau and Polynesian Show

Enjoy a traditional Hawaiian Luau and authentic Polynesian show. Students will learn how to play the ukulele, participate in a hula dance, and discuss the local legends and the cultural connections the Hawaiian people have to the land. This is a Hawaiian favorite you don't want to miss!



# 2024 Fee Schedule

## Registration Fee

Registration Fee (one-time, non-refundable)	\$80
---	------

## Specialty Camps

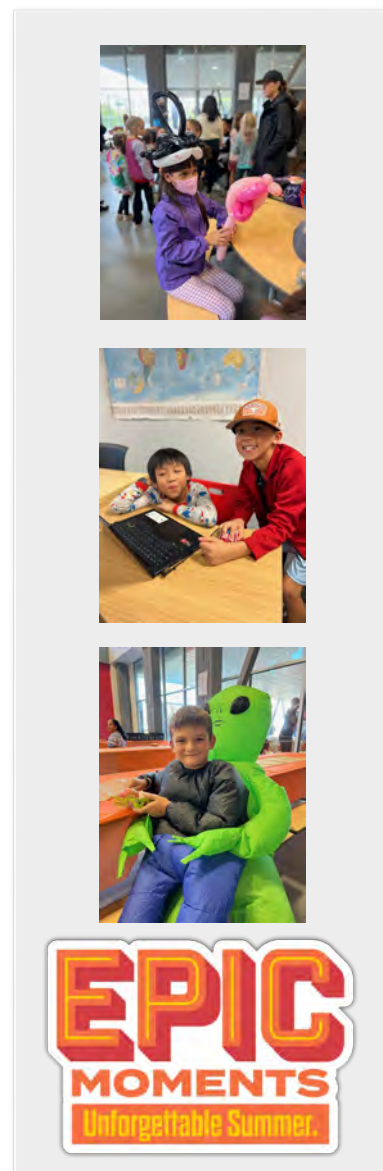
Full Day	
Dungeons and Dragons and the Magic of STEAM	\$650
Chess Camp	\$650

## Specialty Camps

Half Day	
Art in New York	\$500
Broadway Camp	\$500

## Sports Camps

Full Day	
BEARS Basketball Clinic	\$650



**Payment Policy:** A one-time, \$80 non-refundable registration fee, plus a \$25 non-refundable deposit per session is required at registration. The balance of fees for summer programs will be automatically withdrawn on May 1 from the credit card on file. Receive a 5% discount off total camp tuition when registered by March 15.



Camp offerings subject to change. We are always looking to add new and exciting camps and activities. View our camp registration portal for the most up to date schedule.





# 2024 Camp Schedule

**\*Camper T-shirts:** Each camper receives one t-shirt with camp registration (Sizes Youth XS - Adult M).

Week	Specialty Camp		Sports Camp
	Full Day	Half Day	Full Day
<b>Week 1:</b> August 12 - 16	Dungeons and Dragons and the Magic of STEAM		
<b>Week 1:</b> August 12 - 16		Art in New York (1-4 PM)	BEARS Basketball Clinic
<b>Week 2:</b> August 19 - 23	Chess Camp		
<b>Week 3:</b> August 26 - 30		Broadway Camp (1-4 PM)	



# 2024 Camp Policies

**REGISTER  
ONLINE**

Visit the camp section of our website to sign up today.

## Payment Policy

A one-time, \$80 non-refundable registration fee, plus a \$25 non-refundable deposit per session is required at registration. The balance of fees for summer programs will be automatically withdrawn on May 1 from the credit card on file. Receive a 5% discount off total camp tuition when registered by March 15.

## Refund/Cancelation Policy (Day Camp Only)

Cancellations require a 2-week notification from the start date of the session. No refunds will be given for cancellations within 2 weeks. Refunds will not include the \$25 deposit or the \$80 registration fee. In the event the school must cancel a camp, every effort will be made to find a replacement class for the camper. If a refund is provided, it may include all fees, including deposit and registration.

## Refund/Cancelation Policy (Academic, Specialty, and Sports Camps)

Cancellations must be made by April 29, 2024 to receive a refund. Refunds will not include the \$25 deposit or the \$80 registration fee.

## Sibling Discount

10% sibling discount (applied to second and subsequent children only, and not applicable for Early/Late Bird).

## Referral Discount

\$50 camp tuition credit to the referring family for each family referred. Referred family must list referring family name when registering in ACTIVE. Credit may only be used in ACTIVE; no check or cash bonuses.